

## RC 42 Technical Data

### Diesel and LPG Forklift Truck

---

RC 42-40

RC 42-50



RC 42-40/50 Diesel and LPG Forklift Truck

The access to success

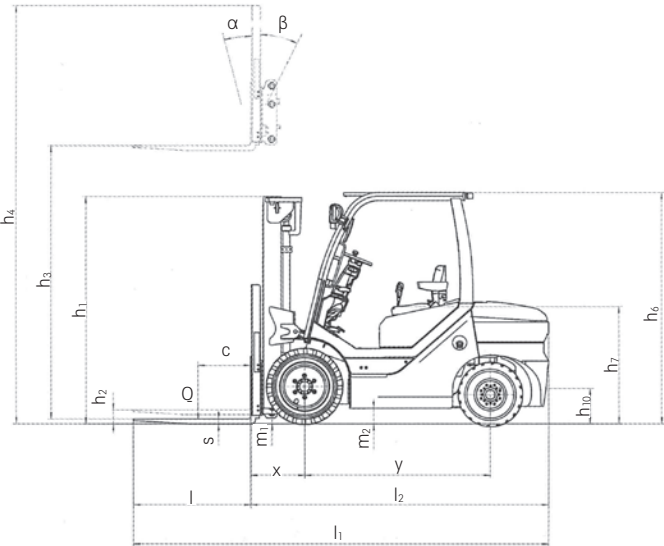
This specification sheet based on VDI standard 2198, only provides the technical values of the standard forklifts.  
Different tyres, other masts and additional equipment, etc. may produce different figures.



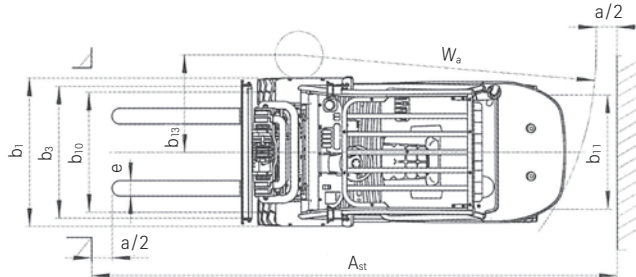
RC 42-40/50 Diesel and LPG Forklift Truck

Technical Drawings

|                      |             |  |                  |                 |                  |                      |                  |                      |                  |                      |                  |                      |  |
|----------------------|-------------|--|------------------|-----------------|------------------|----------------------|------------------|----------------------|------------------|----------------------|------------------|----------------------|--|
| Distinguishing marks | 1.1         | Manufacturer                                   |                  |                 | STILL            |                      | STILL            |                      | STILL            |                      | STILL            |                      |  |
|                      | 1.2         | Manufacturer's type designation                |                  |                 | RC 42-40         |                      | RC 42-50         |                      | RC 42-40         |                      | RC 42-50         |                      |  |
|                      | 1.2.1       | Manufacturer's type number                     |                  |                 | 4331             |                      | 4333             |                      | 4334             |                      | 4336             |                      |  |
|                      | 1.3         | Drive  |                  |                 | Diesel           |                      | Diesel           |                      | LPG              |                      | LPG              |                      |  |
|                      | 1.4         | Operation                                      |                  |                 | Seated           |                      | Seated           |                      | Seated           |                      | Seated           |                      |  |
|                      | 1.5         | Rated capacity/rated load                      | Q                | kg              | 4000             |                      | 5000             |                      | 4000             |                      | 5000             |                      |  |
|                      | 1.6         | Load centre distance                           | c                | mm              | 500              |                      | 500              |                      | 500              |                      | 500              |                      |  |
|                      | 1.8         | Load distance                                  | x                | mm              | 562              |                      | 567              |                      | 562              |                      | 567              |                      |  |
|                      | 1.9         | Wheel base                                     | y                | mm              | 2000             |                      | 2000             |                      | 2000             |                      | 2000             |                      |  |
| Weights              | 2.1         | Service weight                                 |                  | kg              | 7240             | 6560                 | 7780             | 7160                 | 6450             | 6950                 |                  |                      |  |
|                      | 2.2         | Axle load, laden                               | front/rear       | kg              | 10240/1100       | 9300/1280            | 11330/1450       | 11000/1260           | 9460/990         | 10850/1100           |                  |                      |  |
|                      | 2.3         | Axle load, unladen                             | front/rear       | kg              | 3800/3440        | 3210/3350            | 3160/4620        | 3100/4060            | 2645/3805        | 2800/4150            |                  |                      |  |
| Tyres/chassis        | 3.1         | Tyres  |                  |                 | Superelastic     |                      | Superelastic     |                      | Superelastic     |                      | Superelastic     |                      |  |
|                      | 3.2         | Tyre size                                      | front            |                 | 300*15/20PR      |                      | 300*15/20PR      |                      | 300*15/20PR      |                      | 300*15/20PR      |                      |  |
|                      | 3.3         | Tyre size                                      | rear             |                 | 7.00-12/12PR     |                      | 7.00-12/12PR     |                      | 7.00-12/12PR     |                      | 7.00-12/12PR     |                      |  |
|                      | 3.5         | Wheels, number (x = driven wheels)             | front/rear       |                 | 2x/2             |                      | 2x/2             |                      | 2x/2             |                      | 2x/2             |                      |  |
|                      | 3.6         | Track width                                    | front            | b <sub>10</sub> | mm               | 1180                 |                  | 1180                 |                  | 1180                 |                  | 1180                 |  |
| 3.7                  | Track width | rear   | b <sub>11</sub>  | mm              | 1190             |                      | 1190             |                      | 1190             |                      | 1190             |                      |  |
| Basic dimensions     | 4.1         | Tilt of mast/fork carriage                     | forward/backward | α/β             | °                | 6/12                 |                  | 6/12                 |                  | 6/12                 |                  | 6/12                 |  |
|                      | 4.2         | Height of mast                                 | when retracted   | h <sub>1</sub>  | mm               | 2390                 |                  | 2390                 |                  | 2390                 |                  | 2390                 |  |
|                      | 4.3         | Free lift                                      |                  | h <sub>2</sub>  | mm               | 150                  |                  | 150                  |                  | 150                  |                  | 150                  |  |
|                      | 4.4         | Lift   |                  | h <sub>3</sub>  | mm               | 3000                 |                  | 3000                 |                  | 3000                 |                  | 3000                 |  |
|                      | 4.5         | Height of mast                                 | when extended    | h <sub>4</sub>  | mm               | 4275                 |                  | 4275                 |                  | 4275                 |                  | 4275                 |  |
|                      | 4.7         | Height above protective roof (cab)             |                  | h <sub>6</sub>  | mm               | 2260                 |                  | 2260                 |                  | 2260                 |                  | 2260                 |  |
|                      | 4.8         | Seat height relating to SIP/stand height       |                  | h <sub>7</sub>  | mm               | 1315                 |                  | 1315                 |                  | 1315                 |                  | 1315                 |  |
|                      | 4.12        | Coupling height                                |                  | h <sub>10</sub> | mm               | 380                  |                  | 380                  |                  | 390                  |                  | 380                  |  |
|                      | 4.19        | Total length                                   |                  | l <sub>1</sub>  | mm               | 4180                 |                  | 4230                 |                  | 4186                 |                  | 4221                 |  |
|                      | 4.20        | Length including fork backs                    |                  | l <sub>2</sub>  | mm               | 3110                 |                  | 3160                 |                  | 3116                 |                  | 3151                 |  |
|                      | 4.21        | Total width                                    |                  | b <sub>1</sub>  | mm               | 1485                 |                  | 1485                 |                  | 1485                 |                  | 1485                 |  |
|                      | 4.22        | Fork dimensions ISO 2331                       |                  | s/e/l           | mm               | 50/150/1070          |                  | 55/150/1070          |                  | 50/150/1070          |                  | 55/150/1070          |  |
|                      | 4.23        | Fork carriage ISO 2328, class/type A, B        |                  |                 |                  | III A                |                  | III A                |                  | III A                |                  | III A                |  |
|                      | 4.24        | Fork carriage width                            |                  | b <sub>3</sub>  | mm               | 1380                 |                  | 1380                 |                  | 1480                 |                  | 1480                 |  |
|                      | 4.31        | Ground clearance, laden, below mast            |                  | m <sub>1</sub>  | mm               | 145                  |                  | 145                  |                  | 145                  |                  | 145                  |  |
|                      | 4.32        | Ground clearance, centre of wheelbase          |                  | m <sub>2</sub>  | mm               | 180                  |                  | 180                  |                  | 180                  |                  | 180                  |  |
| Performance data     | 4.33        | Aisle width for pallets 1000 x 1200 crossways  |                  | A <sub>st</sub> | mm               | 4552                 |                  | 4597                 |                  | 4557                 |                  | 4597                 |  |
|                      | 4.34        | Aisle width for pallets 800 x 1200 lengthways  |                  | A <sub>st</sub> | mm               | 4752                 |                  | 4797                 |                  | 4757                 |                  | 4797                 |  |
|                      | 4.35        | Turning radius                                 |                  | W <sub>a</sub>  | mm               | 2790                 |                  | 2830                 |                  | 2795                 |                  | 2830                 |  |
|                      | 4.36        | Smallest pivot point distance                  |                  | b <sub>13</sub> | mm               | 900                  |                  | 900                  |                  | 922                  |                  | 922                  |  |
|                      | 5.1         | Driving speed                                  | laden/unladen    |                 | km/h             | 24,4/25,3            | 21/23            | 24,4/25,3            | 21/23            | 20/22                |                  | 20/22                |  |
|                      | 5.2         | Lifting speed                                  | laden/unladen    |                 | m/s              | 0,44/0,53            | 0,40/0,48        | 0,44/0,53            | 0,40/0,48        | 0.45/0.48            |                  | 0.43/0.48            |  |
|                      | 5.3         | Lowering speed                                 | laden/unladen    |                 | m/s              | 0,42/0,29            | 0,53/0,41        | 0,42/0,29            | 0,53/0,41        | 0.38/0.35            |                  | 0.38/0.35            |  |
|                      | 5.5         | Drawbar pull                                   | laden/unladen    |                 | kN               | 25/24                | 33/21            | 25/24                | 33/21            | 20/15                |                  | 22/16                |  |
|                      | 5.7         | Gradeability                                   | laden/unladen    |                 | %                | 20/20                | 20/20            | 20/20                | 20/20            | 20/20                |                  | 20/20                |  |
|                      | 5.10        | Service brake                                  |                  |                 |                  | Mechanical/hydraulic |                  | Mechanical/hydraulic |                  | Mechanical/hydraulic |                  | Mechanical/hydraulic |  |
| IC engine            | 7.1         | Acceleration time                              |                  |                 | Mitsubishi S6S   | ISUZU 6BG1 QC-05     | Mitsubishi S6S   | ISUZU 6BG1 QC-05     | PSI/4,3l         |                      | PSI/4,3l         |                      |  |
|                      | 7.2         | Engine performance in accordance with ISO 1585 |                  |                 | kW               | 52                   | 55,4             | 52                   | 55,4             | 69.8                 |                  | 69.8                 |  |
|                      | 7.3         | Nominal speed                                  |                  |                 | l/min            | 2300                 | 2000             | 2300                 | 2000             | 2300                 |                  | 2300                 |  |
|                      | 7.4         | Number of cylinders                            |                  |                 |                  | 6                    | 6                | 6                    | 6                | 6                    |                  | 6                    |  |
|                      | 7.4.1       | Capacity                                       |                  |                 | cm³              | 4966                 | EU Step 1        | 4966                 | EU Step 1        | 4294                 |                  | 4294                 |  |
|                      |             | Emission level acc. to EU Regulation 2016/1628 |                  |                 |                  | Stage III a          |                  | Stage III a          |                  | Stage III a          |                  | Stage III a          |  |
|                      | 7.9         | Vehicle electrical system voltage              |                  |                 | V                | 12                   |                  | 12                   |                  | 12                   |                  | 12                   |  |
| Miscellaneous        | 8.1         | Type of drive unit                             |                  |                 | Torque converter |                      | Torque converter |                      | Torque converter |                      | Torque converter |                      |  |
|                      | 10.1        | Operating pressure for attachments             |                  |                 | bar              | 200                  |                  | 200                  |                  | 200                  |                  | 200                  |  |
|                      | 10.2        | Oil volume for attachments                     |                  |                 | l/min            | 101                  |                  | 101                  |                  | 108                  |                  | 108                  |  |
|                      | 10.4        | Fuel tank, capacity                            |                  |                 | l                | 90                   |                  | 90                   |                  | 22                   |                  | 22                   |  |
|                      | 10.8        | Towing coupling, type DIN 15170                |                  |                 |                  | Bolt                 |                  | Bolt                 |                  | Bolt                 |                  | Bolt                 |  |



Side view



Top view

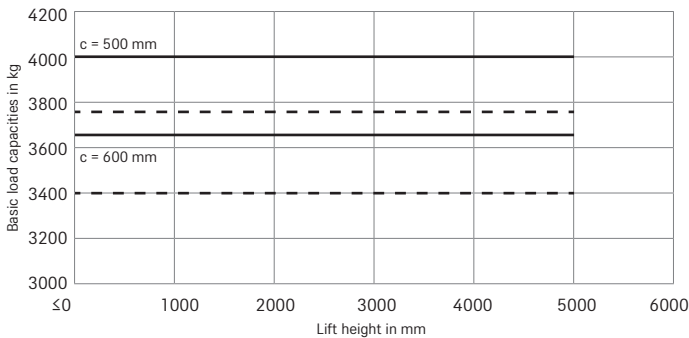
Mast Tables

|                   |                               |                                  |    | Telescopic mast            |      |      |      |      | HiLo mast |      |      | Triplex mast |      |      |      |      |      |      |
|-------------------|-------------------------------|----------------------------------|----|----------------------------|------|------|------|------|-----------|------|------|--------------|------|------|------|------|------|------|
| RC 42-40/RC 42-50 | Nominal lift                  | h <sub>3</sub>                   | mm | 3000                       | 3300 | 4000 | 4500 | 5000 | 3000      | 3500 | 4000 | 3920         | 4350 | 4500 | 4700 | 5000 | 5500 | 6000 |
|                   | Height mast lowered           | h <sub>1</sub>                   | mm | 2275                       | 2425 | 2825 | 3075 | 3325 | 2390      | 2640 | 2890 | 2245         | 2390 | 2441 | 2507 | 2640 | 2807 | 3005 |
|                   | Free lift                     | h <sub>2</sub>                   | mm | 150                        | 150  | 150  | 150  | 150  | 1544      | 1794 | 2044 | 1399         | 1544 | 1595 | 1661 | 1794 | 1961 | 2159 |
|                   | Height mast extended          | h <sub>4</sub>                   | mm | 4275                       | 4575 | 5275 | 5775 | 6275 | 4275      | 4775 | 5275 | 5195         | 5625 | 5775 | 5975 | 6275 | 6771 | 7275 |
|                   | Tilt of mast forward/backward | α/β                              | °  | 6/12                       | 6/12 | 6/8  | 6/6  | 3/6  | 6/12      | 6/12 | 6/8  | 6/6          | 6/6  | 6/6  | 6/6  | 6/6  | 3/6  | 3/6  |
|                   | Tyres front/rear              |                                  |    | 28*9-15/14PR//6,50-10/10PR |      |      |      |      |           |      |      |              |      |      |      |      |      |      |
|                   | Track front/rear              | b <sub>10</sub> /b <sub>11</sub> | mm | 1180/1190                  |      |      |      |      |           |      |      |              |      |      |      |      |      |      |
|                   | Overall width                 | b <sub>1</sub>                   | mm | 1485                       |      |      |      |      |           |      |      |              |      |      |      |      |      |      |

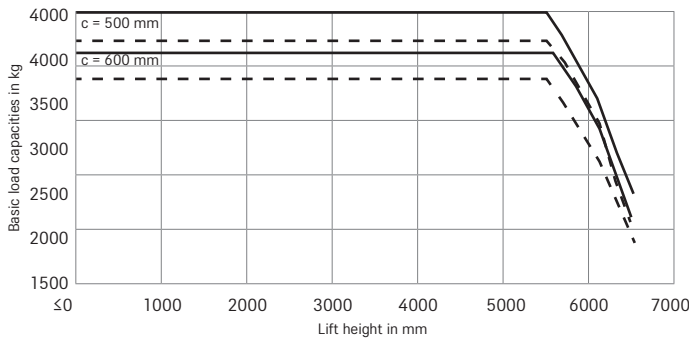
# RC 42-40/50 Diesel and LPG Forklift Truck

## Basic Load Capacities

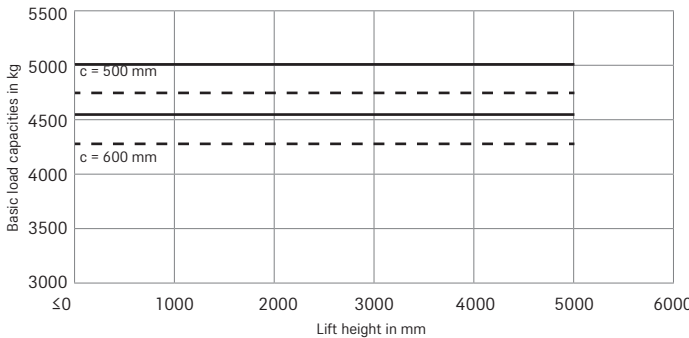
RC 42-40 Telescopic/HiLo - single superelastic tyres



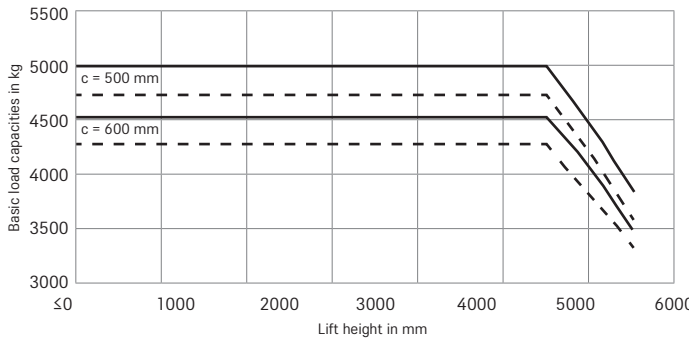
RC 42-40 Triplex - single superelastic tyres



RC 42-50 Telescopic/HiLo - single superelastic tyres



RC 42-50 Triplex - single superelastic tyres



— Standard      - - - With integrated sideshift fork positioner and standard forks  
 The values may vary depending on the truck equipment



## RC 42-40/50 Diesel and LPG Forklift Truck

### Detailed Photos

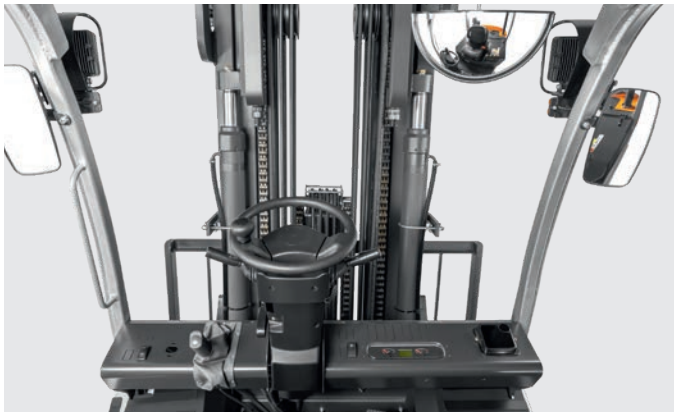
---



Slim mast profiles ensure a good view around the mast to keep an eye on forks and fork carriage during



The ergonomically designed operator platform is spacious and well organised with intuitive operating controls



From their seat in the cab, the operator has a perfect view of everything; the dashboard is well organised and visibility through the mast is excellent



The seamlessly adjustable steering column allows operators to select the most comfortable driving position



The multi-lever controls give the operator maximum control when using the lifting hydraulic system



Narrow bars on the overhead guard ensure optimum visibility and maximum safety



## RC 42-40/50 Diesel and LPG Forklift Truck

### The access to success

---

High performance: High-performance and reliable industrial motor

Everything in sight: Optimum view of forks and load carriers thanks to slim mast profile

Maximum safety: Robust overhead guard maximises the operator's view in all directions



The RC 42 is sure to put you on the road to success. A truck that has been developed for all those who are looking for a robust counterbalanced truck in the low-cost segment, ready for immediate use - without having to forgo the proven STILL quality. Available in a diesel or LPG version and with a lifting capacity of 4-5 tonnes, the RC 42 is a versatile all-rounder that offers an unmatched price-performance ratio. Whether you are handling containers, trailers or pallets, on ramps or on the flat, you can count on this counterbalanced

forklift truck to safely transport your goods to their destination. The suspension system for the operator's cab absorbs any jolts and vibrations caused by uneven floors; the hydraulic system is also very easy to control; and the operator enjoys excellent visibility on all sides. Furthermore, you can choose from a wide range of equipment options to suit your particular logistics planning requirements. It might be an entry-level truck, but with all these benefits, the RC 42 more than lives up to STILL's exceptional quality standards.

### The 'Simply Efficient' factors: Performance attributes as a measure of economic efficiency

---



#### Simply easy

- Precise operation: Intuitive and precise load handling made easy thanks to separate inch pedal
- Direct transmission control: Quiet and smooth driving experience, even at low speeds and on ramps
- Comfortable operator's cab: Excellent suspension to absorb jolts and vibrations; comfortable seat; and large footwell with foot-operated parking brake



#### Simply powerful

- Reliable performance: Powerful industrial engine for reliable performance
- Adaptable to on-site conditions: Choice of mast and fork lengths to suit different applications
- Effortless storage of heavy loads: High residual load capacity ensures even the heaviest loads can be lifted to the required height
- Well-equipped for tough working conditions: Dusty environments pose no problem thanks to additional air filter



#### Simply safe

- Safe goods handling: Excellent excellent visibility on all sides of the truck
- Safe entry and exit: Wide metal step with anti-slip design
- Safe and ergonomic operation: Long hydraulic control elements and separate levers for each function
- Safe working in dark environments: High-spec lighting as standard
- Safe reversing: Rear handhold with integrated horn



#### Simply flexible

- Ergonomic gas cylinder changeover: Range of swivel and fold-out holders for different LPG cylinders available
- Choice of different cab variants: Forklifts available with full and semi cab designs
- Flexible options to suit any application: Wide range of equipment and attachments to choose from

## RC 42-40/50 Diesel and LPG Forklift Truck Equipment Variants



|              |   | Diesel   |          | LPG      |          |
|--------------|---|----------|----------|----------|----------|
|              |   | RC 42-40 | RC 42-50 | RC 42-40 | RC 42-50 |
| Driver's cab | Steel overhead guard with open design   | ●        | ●        | ●        | ●        |
|              | Various weatherproofing options   | ○        | ○        | ○        | ○        |
|              | Canvas cab  | ○        | ○        | ○        | ○        |
|              | Driver's cab  | ○        | ○        | ○        | ○        |
|              | Door on right and left with double sliding windows  | ○        | ○        | ○        | ○        |
|              | Tinted front and rear windscreen, plastic roof window   | ○        | ○        | ○        | ○        |
|              | Front and rear windscreen wiper and wash system   | ○        | ○        | ○        | ○        |
|              | Handhold for reversing located on back right-hand side  | ●        | ●        | ●        | ●        |
|              | Comfortable operator's seat   | ●        | ●        | ●        | ●        |
|              | Warm water heating  | ○        | ○        | ○        | ○        |
|              | Fan to keep operator platform cool in warm conditions   | —        | —        | —        | —        |
| Mast         | Telescopic free view mast with and without full free lift   | ○        | ○        | ○        | ○        |
|              | Triplex free view mast  | ○        | ○        | ○        | ○        |
|              | Load backrest   | ●        | ●        | ●        | ●        |
|              | Various fork carriage widths  | ○        | ○        | ○        | ○        |
|              | Tilt angle 6/12 degrees, front/rear tilt  | ●        | ●        | ●        | ●        |
| Tyres        | Sideshift fork positioner   | ○        | ○        | ○        | ○        |
|              | Super-elastic tyres, single or twin   | ○        | ○        | ○        | ○        |
|              | Super-elastic tyres, natural colours, single or twin  | ○        | ○        | ○        | ○        |
| Hydraulics   | Pneumatic tyres   | ●        | ●        | ●        | ●        |
|              | Single or double-acting ancillary hydraulic system for controlling attachments  | ○        | ○        | ○        | ○        |
|              | Ergonomic and sensitive multi-lever operating controls  | ●        | ●        | ●        | ●        |
|              | High-quality multi-purpose universal oil for combustion engine and drive axle – for use all year round                          | ●        | ●        | ●        | ●        |
|              | Low-temperature hydraulic oil for combustion engine and drive axle – for forklifts operating in low temperatures down to -20 °C | ○        | ○        | —        | —        |
| Drive        | Valve block preparation for controlling attachments with one or two functions without hose connections                          | ○        | ○        | ○        | ○        |
|              | Forklifts with LPG system   | —        | —        | ●        | ●        |
|              | Dry air filter with additional pre-filter   | —        | —        | —        | —        |
|              | Larger dry air filter   | —        | —        | ○        | ○        |
|              | Dry air filter  | ●        | ●        | ●        | ●        |
|              | Raised exhaust pipe   | ●        | ●        | —        | —        |
|              | Powerful industrial diesel engine   | ●        | ●        | —        | —        |
|              | Powerful industrial LPG engine  | —        | —        | ●        | ●        |
|              | Ergonomic holder for LPG bottles different diameters – fold-out design for simpler cylinder replacement                         | —        | —        |          |          |
|              | Holder for 2 LPG bottles different diameters – design for simpler bottle replacement  | —        | —        | ●        | ●        |
| Brake        | Diesel fuel tank, 90 litres   | ●        | ●        | —        | —        |
|              | Mechanical/hydraulic operating brake  | ●        | ●        | ●        | ●        |
| Safety       | Low centre of gravity and steering axle with high self-aligning bearing for optimum safety                                      | ●        | ●        | ●        | ●        |
|              | Simple and safe entry and exit via large non-slip steps   | ●        | ●        | ●        | ●        |
|              | Audible alarm   | ●        | ●        | ●        | ●        |
|              | LED lighting system   | ○        | ○        | ○        | ○        |
|              | Audible alarm when reversing  | ●        | ●        | ●        | ●        |
|              | Flashing light  | ○        | ○        | ○        | ○        |
|              | Panoramic mirror  | ●        | ●        | ●        | ●        |
|              | External rear mirror  | ○        | ○        | ○        | ○        |

● Standard   ○ Optional   — Not available



STILL GmbH  
Berzeliusstr. 10  
22113 Hamburg  
Germany  
Tel.: +49 40 73 39 20 00  
Fax: +49 40 73 39 20 01  
info@still.de

**For further information please visit**  
**[www.still.eu](http://www.still.eu)**

STILL is certified in the following  
areas: Quality management,  
occupational safety, environmental  
protection and energy management.



**first in intralogistics**